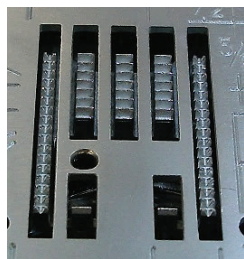
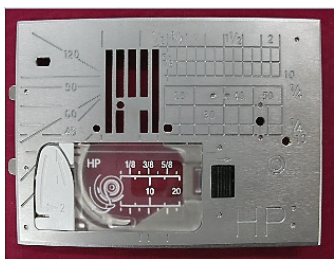




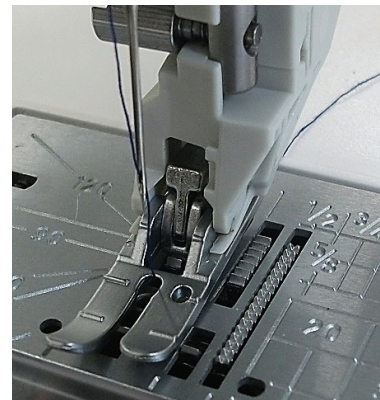
AcuFeed Flex Professional Grade Foot (HP2)

For models compatible with Professional Grade Needle Plate (HP)

This foot provides superior visibility and is great for curves and precise topstitching. It holds fabrics firmly in sync with the feed dogs to achieve professional results. For use in combination with Professional Grade Needle Plate (HP). Utilizes the left side feed dogs.



*AcuFeed Flex Professional Grade Foot (HP2) must be used with the Professional Grade Needle Plate (HP).



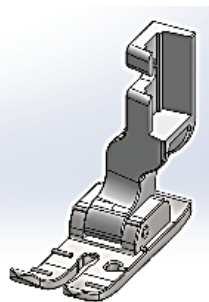
Part Number: 202415004

Provides professional design and feed performance!

Professional Design: Great for 'curves and precise topstitching' due to the narrow foot width with superior visibility provided by the shape of the slit at the front of the foot.

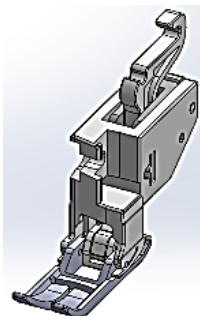
Feed performance: Provides smooth feeding of top layer of fabric in sync with bottom layer for quilting and sewing leather or vinyl; prevents fabric puckering for knit and cupro.

Professional Grade Foot (HP)



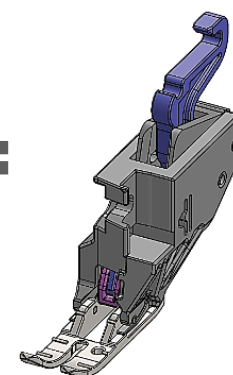
Professional Design: especially curves and precise topstitching

AcuFeed Flex



Feed Performance

AcuFeed Flex Professional Grade Foot (HP2)



By matching the edge of the foot against the edge of the fabric, you can sew a scant 1/4" seam allowance!

Sized perfectly for creating scant 1/4" seams. This foot provides very stable sewing and good feed performance for piecing!

*The stitches available are automatically displayed when Needle Plate (HP) is attached.

*When piecing, change the stitch length to 1.5-2.0.



Compatible Machines:

- Horizon Quilt Maker Memory Craft 15000
- Horizon Memory Craft 9450QCP
- Horizon Memory Craft 9400QCP
- Memory Craft 6700P